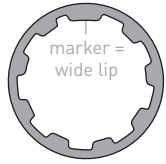


Elaboration on step 2



Shimano

12 cutouts on inside

&

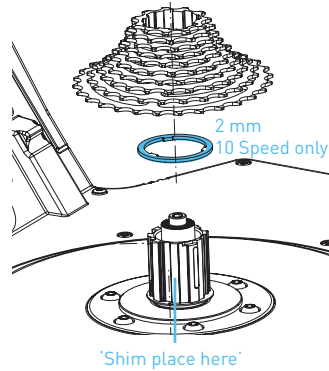


SRAM

9 cutouts on inside

9 & 10 speed (9 or 10 sprockets)

1. Place spacers
 - a. No pocket, use EDCO spacer 2mm (T2805.10)
 - b. With pocket, use Shimano original spacer 1mm & EDCO spacer 2mm (T2805.10)
2. Place cassette on the body, sprocket by sprocket
Align wide lip with 'Shim Place here'



11 speed (11 sprockets)

1. Don't use any spacer
2. Place cassette on the body, sprocket by sprocket
Align wide lip with 'Shim Place here'



Campagnolo

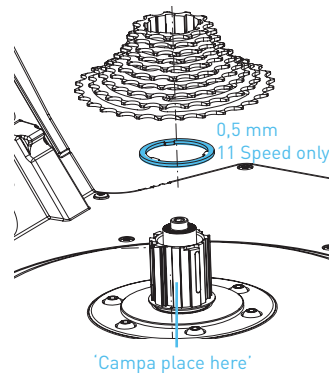
4 cutouts on inside

9 & 10 speed (9 or 10 sprockets)

1. Don't use any spacer
2. Place cassette on the body, sprocket by sprocket
Align campa marker with 'Campa place here'

11 speed (11 sprockets)

1. Place EDCO spacer 0,5mm (T2805.09)
2. Place cassette on the body, sprocket by sprocket
Align deviant lip with text 'Campa place here'



Additional instructions

Assembling NEO Smart

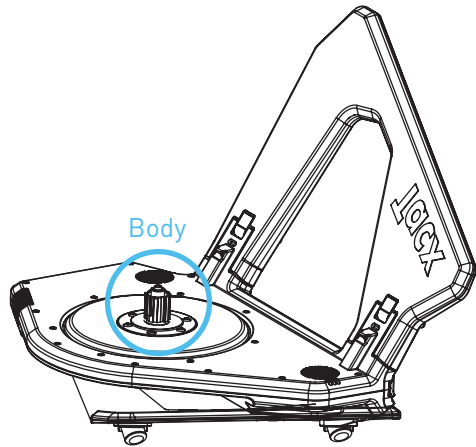


Installing the cassette

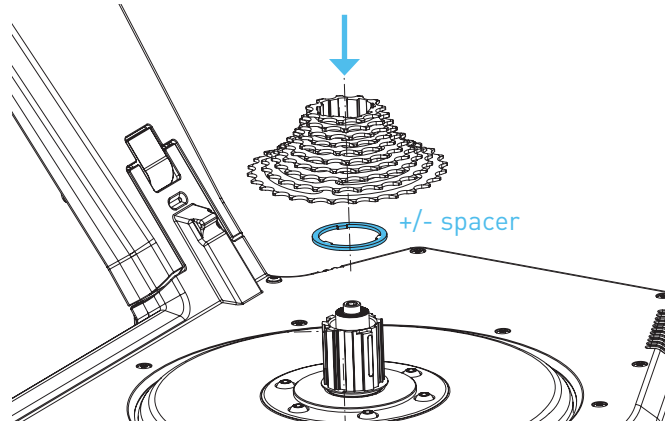
Tacx

How to install your cassette

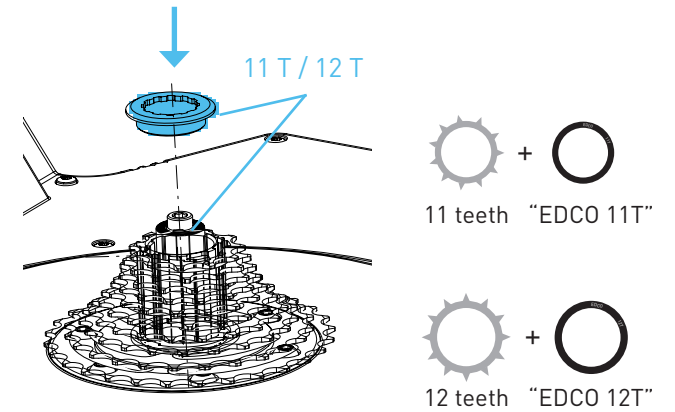
1. Unfold the right leg, keep left leg folded and place the trainer on a table with the body facing upward.



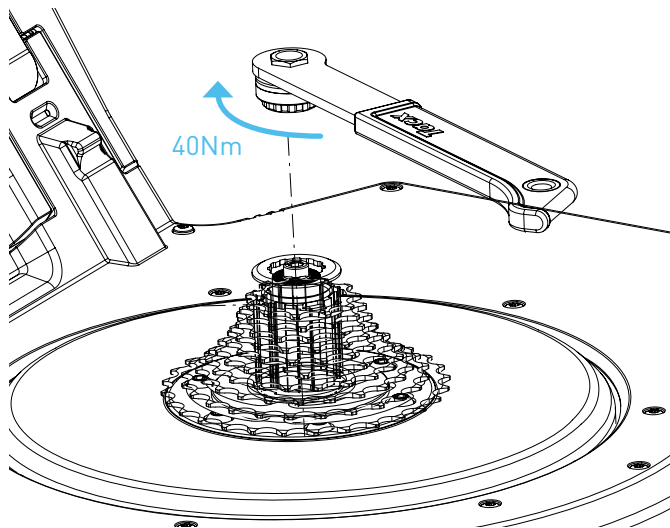
2. Place the cassette. See backside of this leaflet for assemble instructions of different cassettes.



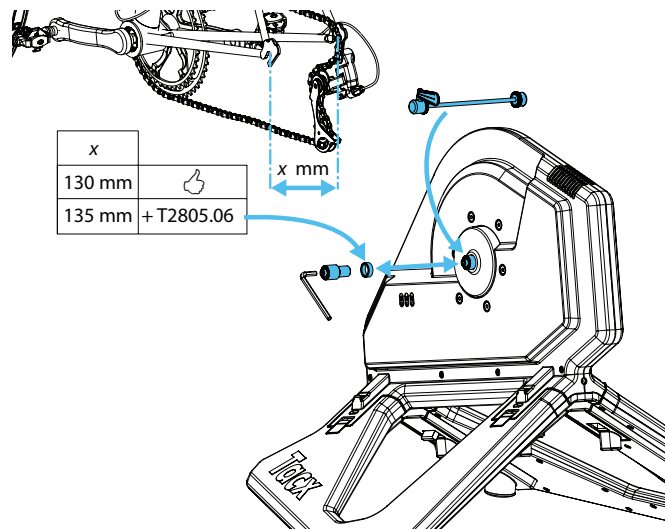
3. Place locking. Count the amount of teeth on the outside of the cassette, of the smallest (last) sprocket, and select the corresponding locking.



4. Tighten with a **Campagnolo** cassette remover (like the T4547), with max. 40Nm (Shimano remover doesn't fit the EDCO locking).



5. Place the quick release. Measure the width of the bike's rear axle, use the fill ring (T2805.06) in case it's 135mm.



6. Cassette is installed. Please return to the Quick start guide for further instructions on mounting the bike on the NEO.

